
Company Name

Address 1

Address 2

City

State/Zip code

Contact Name

Telephone Number

Facsimile Number

E-mail address

Make copies of this form to transmit your switch requirements. If you have your own standard's drawing, please fill out the customer information and send it with this fax form.

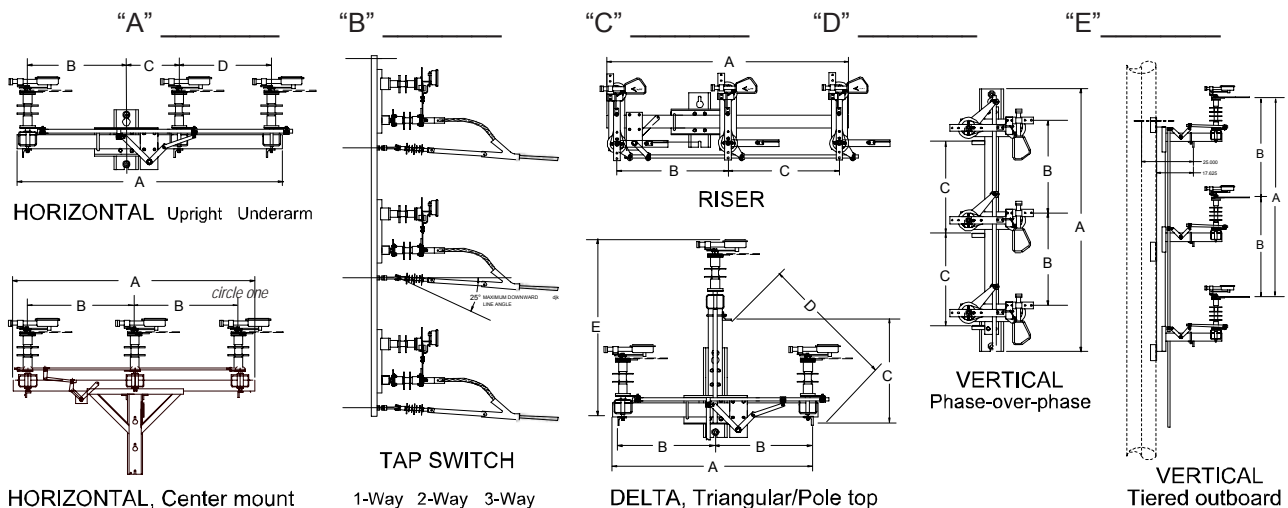
Step 1. Voltage Class _____ kV Continuous current rating^①: _____ A Momentary current _____ kA

Step 2. Insulator type (circle one): Silicone Porcelain One BIL class higher? _____

Step 3. Interrupter type (circle one): None ArcWhip ArcChute AmpRupter AmpVac

Step 4. Crossarm type (circle one): Galvanized steel Fiberglass Aluminum

Step 5. Select the configuration (circle one) and specify spacing dimensions, if necessary:



Step 6. Select the control mechanism : Reciprocating (↑↓) Torsional (↻) Clockwise or Counterclockwise
 Hookstick *to open; viewed looking down on the handle*

Step 7. Select control location:  Specified location; quadrant _____

^① LineBOSS switches are ANSI rated switches. The LineBOSS Lx6xxxx is rated 600 Amps continuous current per the ANSI C37.30 temperature rise test requirements, and for 900 Amp continuous current per the IEEE 1247 temperature rise test requirements. The LineBOSS Lx9xxxx is rated 900 Amps continuous current per the ANSI C37.30 temperature rise test requirements. The LineBOSS Lx1xxxx is rated 1200 Amps continuous current per the ANSI C37.30 temperature rise test requirements. Momentary current ratings (10 cycle) are: Lx6xxxx 600 A (ANSI C37.30) = 40 kA
Lx9xxxx 900 A (ANSI C37.30) = 51 kA
Lx1xxxx 1200 A (ANSI C37.30) = 70 kA

Step 8. Select control rod (circle one): Galvanized pipe: $\frac{3}{4}$ " 1" $1\frac{1}{2}$ " 2" other _____
 Fiberglass: 1" round $1\frac{3}{4}$ " square other _____

Step 9. Select control rod length (circle one): 30 ft. 40 ft. other _____

Step 10. Select additional accessories and modifications (check off and write in)

- "Interrupter Latched" indicator reflective flags (as viewed from directly under the crossarm; Yellow flags indicate CAUTION, an open or improperly closed switch i.e. interrupter not latched)
- Provision for Neutral (4-wire)
- Pole mounting bands; Specify _____
- Substation mounting: Specify base mounting dimensions or furnish drawing.
- Surge Arrestor brackets set of 3 arrestor brackets set of 6 arrestor brackets
- Extension links: set of 6; each 6" long set of 6; each 14" long
- Terminals: Terminal paddle for fired wedge connectors _____(specify size)
 Terminals, 2-hole copper NEMA pad #2-500 kcmil (600 & 900 A switch) Specify: _____
 Terminals, 4-hole copper NEMA pad 500-750 kcmil (1200 A switch) Specify: _____
 Terminals, other; _____(specify size)
- Sensor Brackets; 1 set of 3 brackets
- Current/Voltage Sensors: 3 each of Current Voltage Current/Voltage
- Fiberglass section in pipe control rod: 1" round fiberglass $1\frac{3}{4}$ " square fiberglass
- Station post insulator in control rod section
- Intermediate control rod guides Oval-eye Nuts Swing-arm type
- Bonded handle Grounding connector on crossarm _____ AWG range
- Key Interlock - single key for circuit switching safety ("locked open")
- Crossarm Braces Galvanized Steel Fiberglass
- Lifting Points Single Double

Notes/Sketches