



BRACKETS MOUNTS & HARDWARE



Inertia Engineering & Machine Works, Inc.
6665 Hardaway Road, Stockton CA 95215

Tel: 800-791-9997 | Fax: 209-931-8186
E-mail: sales@inertiaworks.com

Section 6 - BRACKETS, MOUNTS & HARDWARE

- **BRACKETS, MOUNTS & HARDWARE6.0**
 - Brackets, Mounts & Hardware Additional Products
and Accessories 6.10
 - Insulator Brackets for Overhead Lines 6.20
 - Vault Brackets and Junction Cabinets 6.30
 - Substation Flexible Jumpers 6.40
 - Miscellaneous Hardware. 6.50
 - Self-Design Worksheet 6.60



Brackets, Mounts & Hardware

ADDITIONAL PRODUCTS AND ACCESSORIES

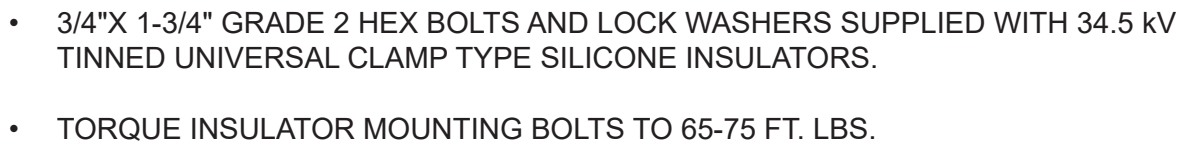
INERTIA offers a series of supporting components and accessories to aid in the switchgear construction process including brackets, mounts, hardware, jumpers, as well as other. Please see the items listed below:

- Bracket, Mounts & Hardware Additional Production and Accessories
 - 15 kV - 69 kV Triangular Standard or Raptor Clearance (*with or without Insulators*)
 - 15 kV - 69 kV Twin Circuit Pole Top Insulator Frame (*with or without Insulators*)
- Insulator Brackets for Overhead Lines
 - Special Application Pole or Tree Mounted Insulator Brackets (*with or without Insulators*)
 - Line Post Insulator Brackets
 - Single Phase or 3 Phase Termination Bracket
 - Custom Standoff Brackets
- Vault Rack/Junction Bar Assemblies
 - Vault Junction Bars
 - Elbow Parking Stands (*Standard or Wall Mounted*)
 - Temporary Vault Support Kits
- Substation Flex Jumpers:
 - 1 KA - 4 KA Super-flexible Busbar Jumpers
 - 800 A Flexible Tinned Copper Braid Jumpers
- Misc. Hardware:
 - Station Post Insulator Adapters
 - 5 kV - 25 kV Phase/Conductor Spacers
 - Fuse Holders, Pole Mounted
 - 1/2"-13 Torque-limiting Shear Nuts (303 Stainless Steel or Zinc, Die Cast)

In addition to the above listed products Inertia accepts customer requests for custom designed hardware and equipment. Please use the "Self-Design Worksheet" or submit any drawings or supporting documentation with your request for quote.

All rights reserved

CAT1170119 | © 2017 Inertia Engineering & Machine Works, Inc. Printed 01/17

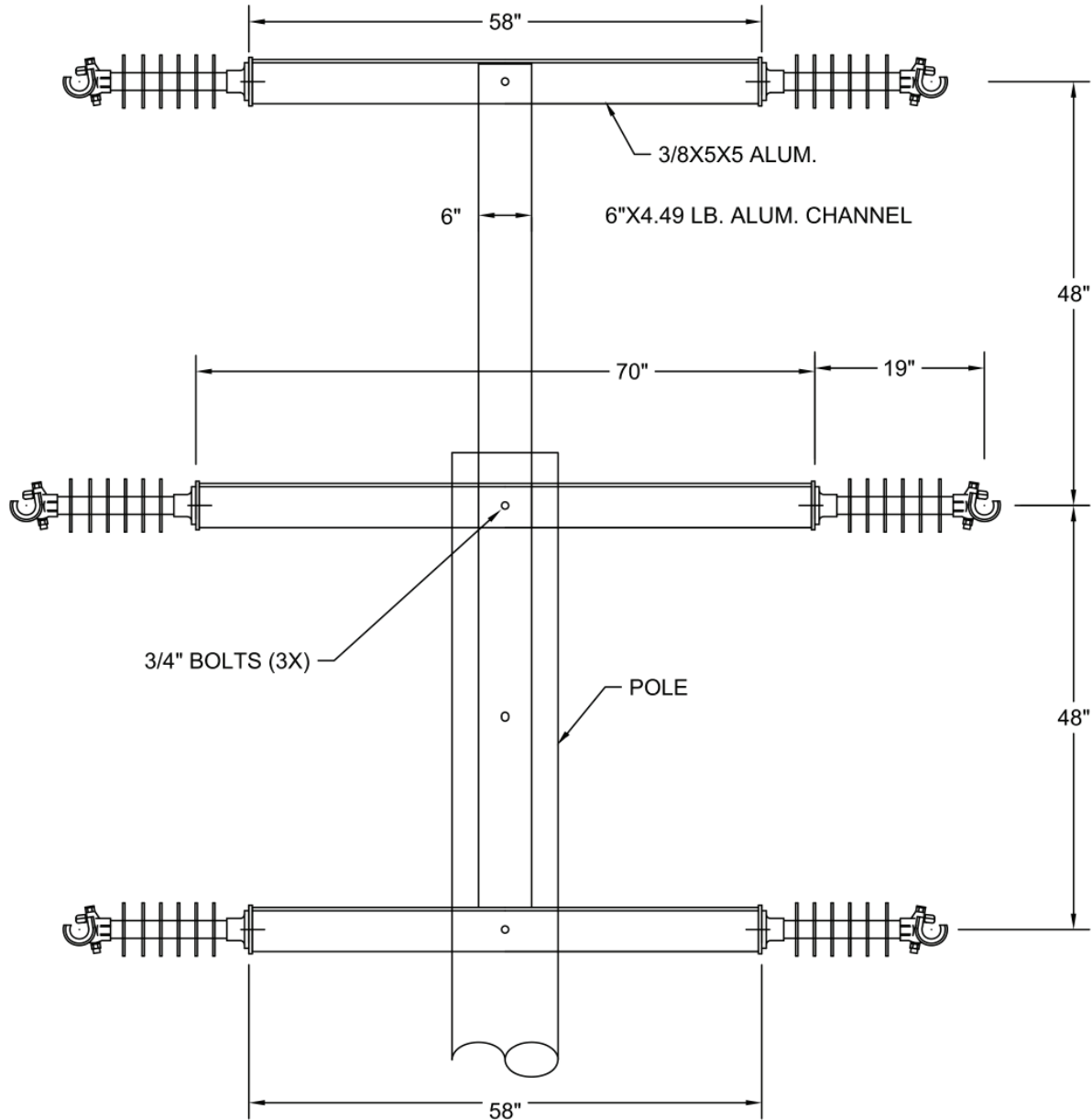


INERTIA Engineering & Machine Works, Inc.
6665 Hardaway Road • Stockton, CA 95215

6.11

Twin Circuit, 34.5 kV Pole Top Insulator Frame

Twin circuit insulator brackets reduce installation time and crossarm replacement. They are available in 15 kV - 69 kV versions with either standard clearances or Avian (Raptor) protection clearances. They are available either with or without insulators.




6061-T6 Anodized Aluminum

Frame is supplied with or without insulators.

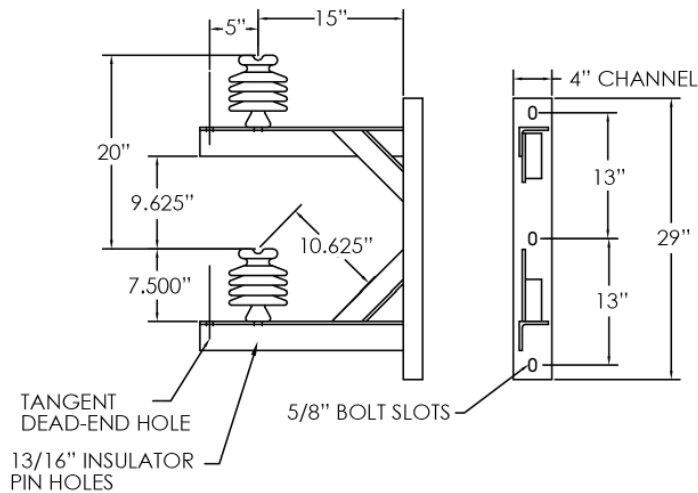
Insulator are bolted upright on the horizontal arms for shipping

This drawing is for illustrative purposes only and therefore; may, or may not reflect the current revision of this drawing. Please request the current revision from the factory upon quote.

	Materials:	Description: Twin Circuit, 34.5 kV Pole Top Insulator Frame	
	Finish:		
	Scale: NTS	Drawing No.: 9-394M	
	Drawn By: N/A		
	Date: N/A		
			Revision: 00

Pole or Tree Mounted Insulator Brackets


Special application insulator mounting brackets. Lightweight durable; available with or without insulators.



TWO POLE INSULATOR RACK

9-359B

This drawing is for illustrative purposes only and therefore; may, or may not reflect the current revision of this drawing. Please request the current revision from the factory upon quote.

	Materials:		Description: Pole or Tree Mounted Insulator Brackets	
	Finish:			
	Scale:	NTS		
	Drawn By:	N/A	Drawing No.: 9-359M	Revision: 00
	Date:	N/A		