

The LineBOSS™ Sidebreak switch is the most robust, yet elegant sidebreak switch in the market today. Every LineBOSS™ component brings meaningful operator benefits for years to come. Features such as ¼ inch steel phase base, stainless steel to brass bearings, silver plated copper reverse loop contacts and busbar blades mean efficient and smooth operation over a very long life; even in hostile environments where dust, humidity, corrosives and other industrial or natural contaminants play havoc with most. You'll be amazed with how much switch you can buy for the money. The LBS distribution switch is RUS accepted.

Specifications:

Switch Ratings:

Voltage Class: 15.5 kV, 25.8 kV & 38kV

Continuous Current Class: 600, 900, 1200

Amps

Fault Close: 15 kA rms-asym: 5 X manual operation

20 kA rms-asym: 3 X manual operation

30 kA rms-asym: 2 X manual operation

Momentary current: 600 A: 40,000 A rms 10 cycles

25,000 A rms 3 seconds

900 A: 51,000 A rms 10 cycles

32,000 A rms 3 seconds

12000 A: 70,000 A rms 10 cycles

44,000 A rms 3 seconds

Ice breaking: ¾" (manual operation)

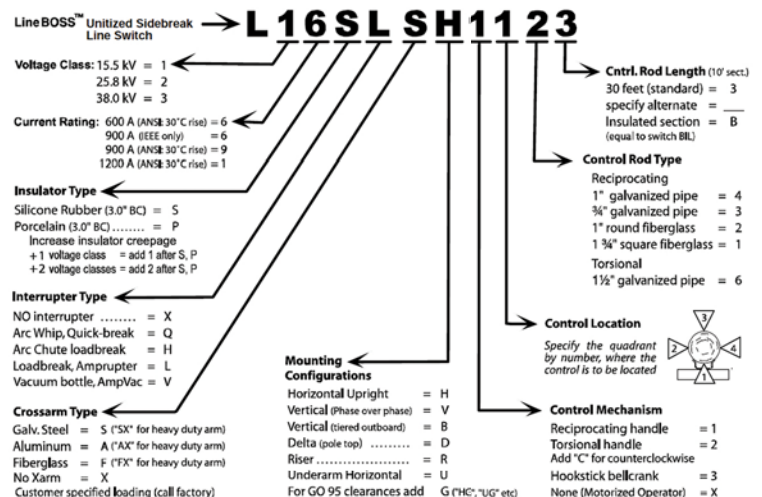
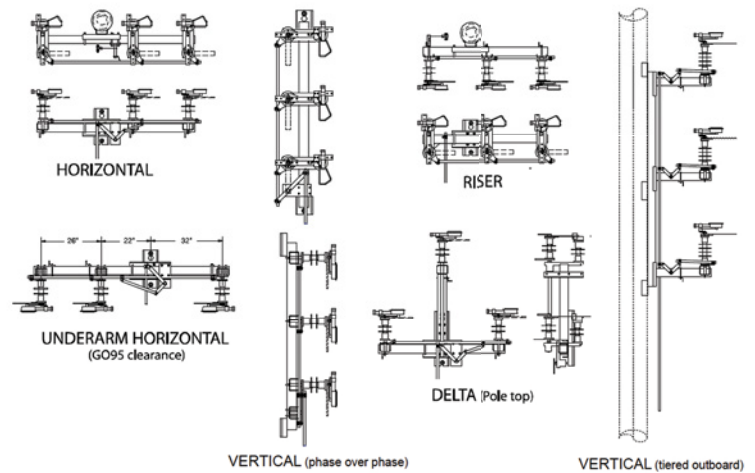
Mechanical: 5000 cycles (open/close)

Standard Configurations

- Horizontal (upright)
- Horizontal (center mount)
- Vertical (tiered outboard)
- Vertical (phase over phase)
- Horizontal (underarm)
- Raiser
- Delta (pole top)



LineBOSS™ Standard Configurations



Note: Consult the factory for any options not listed, including; arrestors, sensors, support brackets etc.
A Fax-back form can be found on the next page. Copy, fill-out and fax it back with your requirements.