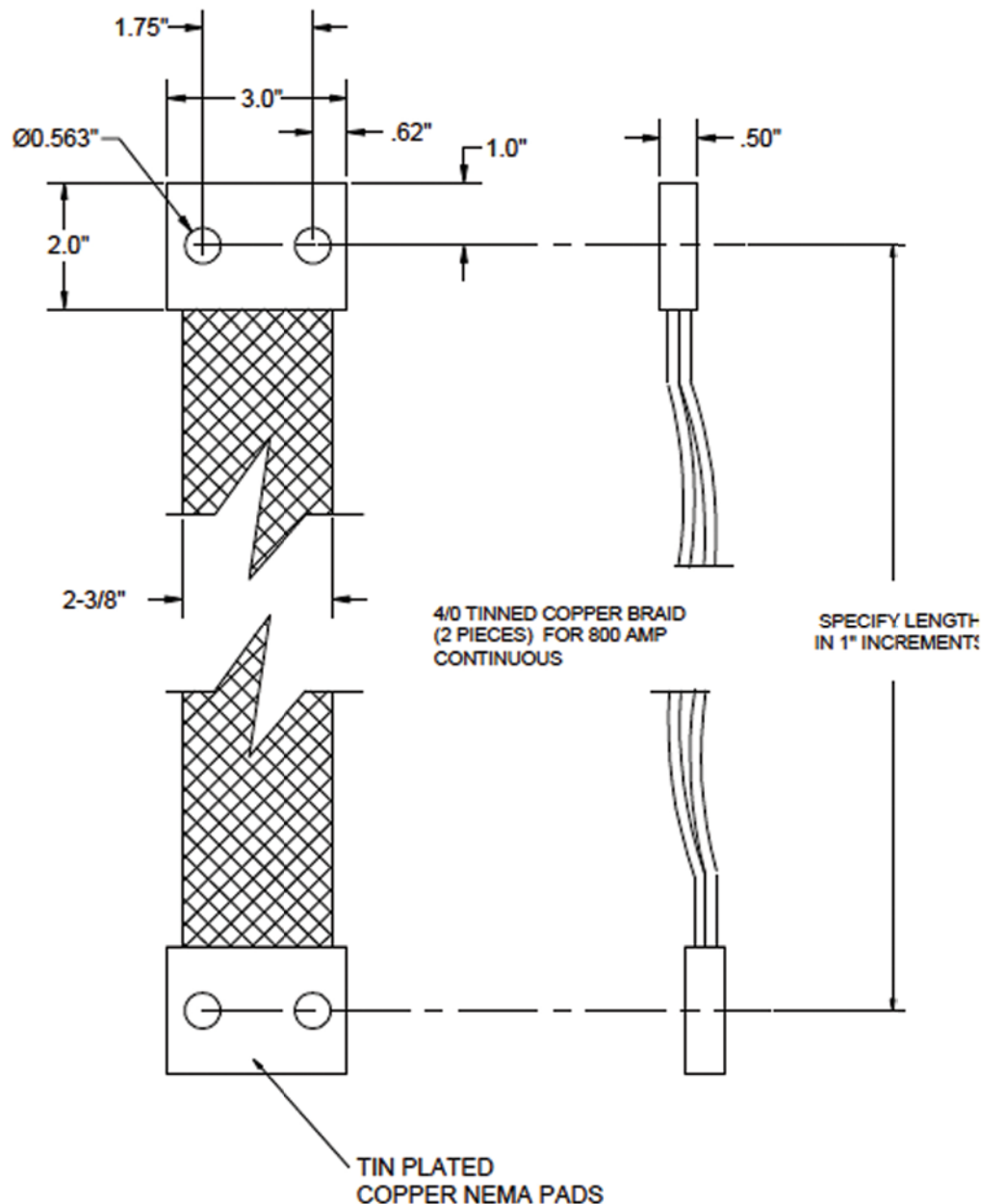


# Brackets, Mounts & Hardware

## Substation Flexible Jumpers: Configuration Drawings

### Flexible Tinned Copper Braid Jumper, 800 A

**Swaged, tinned copper, flexible flat braids are available in customer specified lengths. Terminal pad configuration are available in 150 to 1200 A continuous current ratings. Use Inertia stainless steel shear-nuts with the jumpers to make repeatable and reliable electrical connections to electrical equipment.**



This drawing is for illustrative purposes only and therefore; may, or may not reflect the current revision of this drawing. Please request the current revision from the factory.