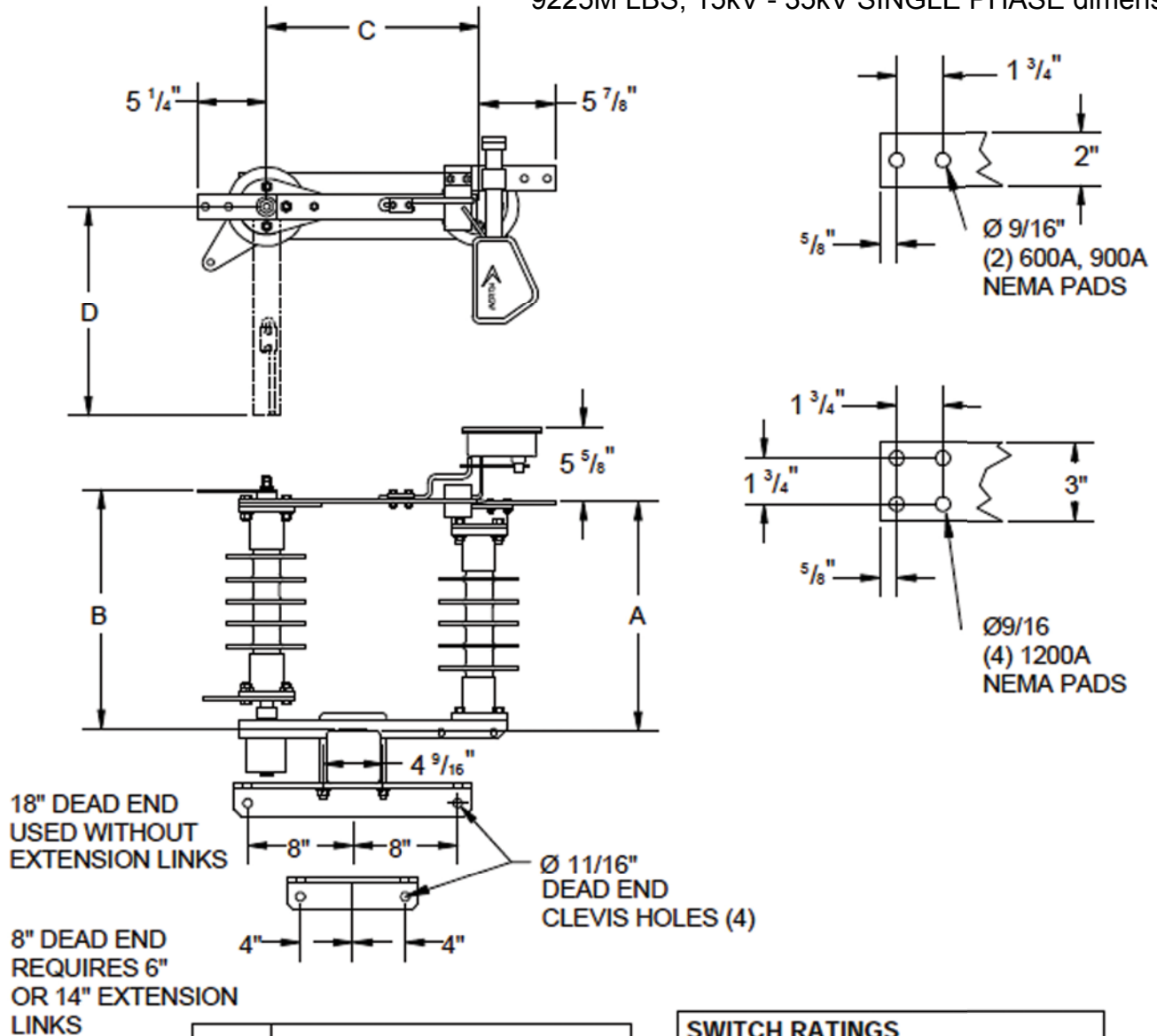


15 kV – 35 kV Sidebreak GOAB Switch: Configuration Drawings

9225M LBS, 15kV - 35kV SINGLE PHASE dimensions



DIM	NOMINAL VOLTAGE RATING		
	15 kV	25 kV	35 kV
A	13 1/2"	17 1/2"	21 1/2"
B	14 1/4"	18 1/4"	22 1/4"
C	13 3/16"	16 3/16"	22 3/16"
D	13"	16"	22"

SWITCH RATINGS

Voltage Class: 15 kV nom. (15.5 kV max.) 110 kV BIL
25 kV nom. (25.8 kV max.) 150 kV BIL
35 kV nom. (38.0 kV max.) 200 kV BIL

Current Class: 600, 900 and 1200 Amps, continuous

Momentary Current Rating:

600 A Continuous: 40,000 Amps, 10 cycles
25,000 Amps, 3 seconds
900 A Continuous: 51,000 Amps, 10 cycles
32,000 Amps, 3 seconds
1200 A Continuous: 70,000 Amps, 10 cycles
44,000 Amps, 3 seconds

This drawing is for illustrative purposes only and therefore; may, or may not reflect the current revision of this drawing. Please request the current revision from the factory.