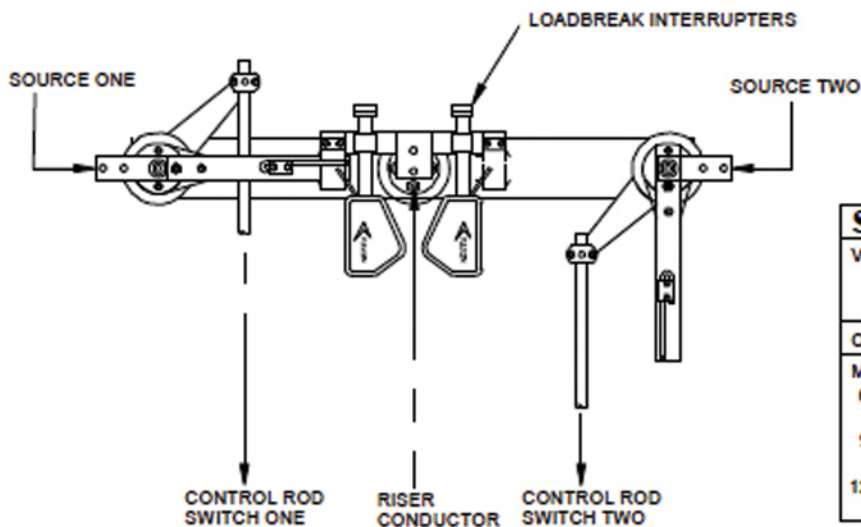
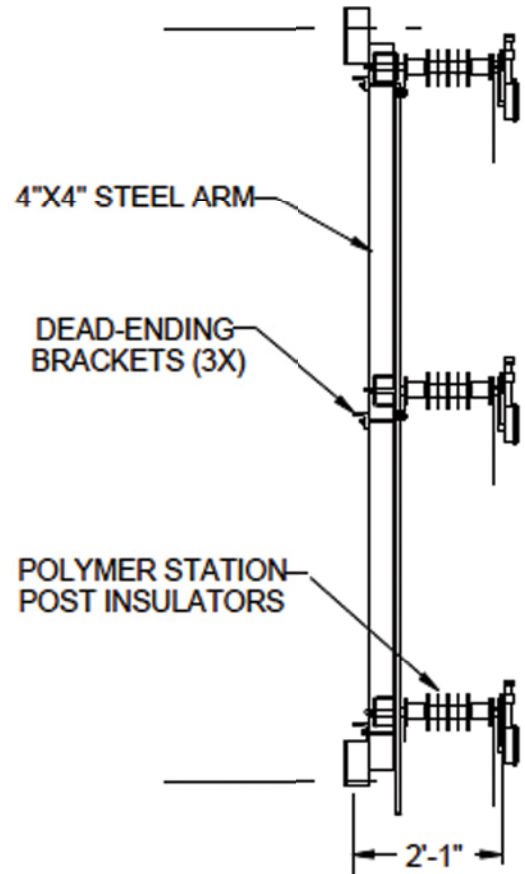
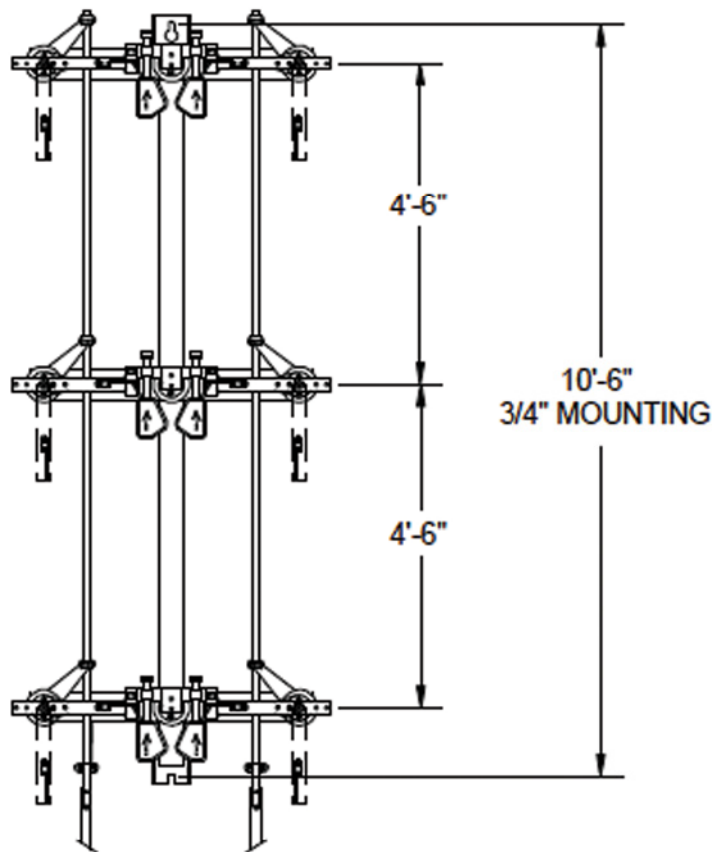


15 kV – 35 kV Sidebreak GOAB Switch: Configuration Drawings

9382M LBS, 25kV, TWIN TAP RISER (pole mounted) dimensions



SWITCH RATINGS

Voltage Class: 15 kV nom. (15.5 kV max.) 110 kV BIL
25 kV nom. (25.8 kV max.) 150 kV BIL
35 kV nom. (38.0 kV max.) 200 kV BIL

Current Class: 600, 900 and 1200 Amps, continuous

Momentary Current Rating:

600 A Continuous: 40,000 Amps, 10 cycles
25,000 Amps, 3 seconds
900 A Continuous: 51,000 Amps, 10 cycles
32,000 Amps, 3 seconds
1200 A Continuous: 70,000 Amps, 10 cycles
44,000 Amps, 3 seconds

This drawing is for illustrative purposes only and therefore; may, or may not reflect the current revision of this drawing. Please request the current revision from the factory.