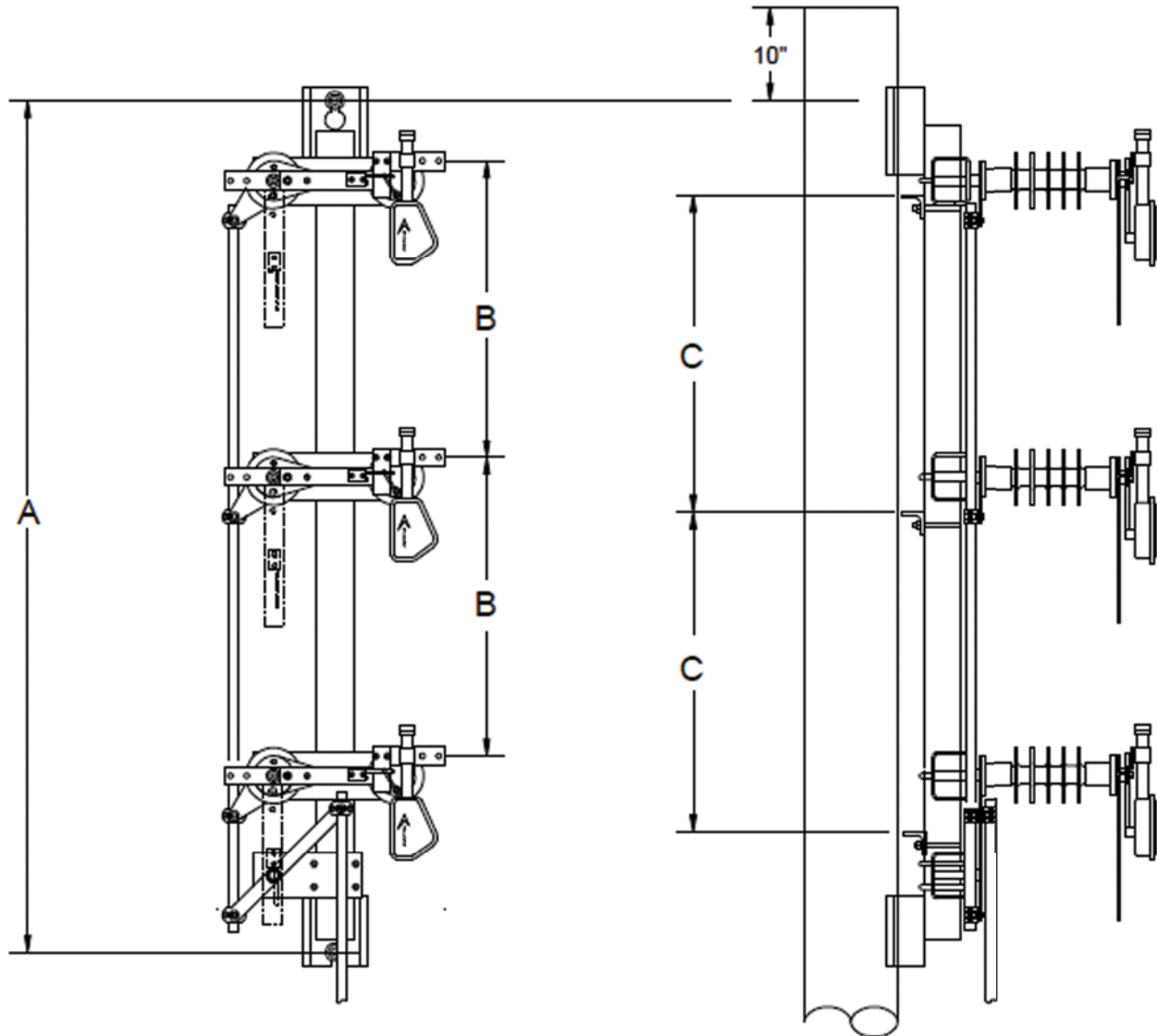


## 15 kV – 35 kV Sidebreak GOAB Switch: Configuration Drawings

9184M LBS, 15kV - 35kV VERTICAL (phase-over-phase) dimensions



DIM	NOMINAL VOLTAGE RATING		
	15 kV	25 kV	35 kV
A	81"	92"	125"
B	26 1/4"	32"	48 1/2"
C	28 1/2"	34 1/4"	50 3/4"

SWITCH RATINGS	
Voltage Class: 15 kV nom. (15.5 kV max.) 110 kV BIL 25 kV nom. (25.8 kV max.) 150 kV BIL 35 kV nom. (38.0 kV max.) 200 kV BIL	
Current Class: 600, 900 and 1200 Amps, continuous	
Momentary Current Rating:	
600 A Continuous:	40,000 Amps, 10 cycles 25,000 Amps, 3 seconds
900 A Continuous:	51,000 Amps, 10 cycles 32,000 Amps, 3 seconds
1200 A Continuous:	70,000 Amps, 10 cycles 44,000 Amps, 3 seconds

This drawing is for illustrative purposes only and therefore; may, or may not reflect the current revision of this drawing. Please request the current revision from the factory.