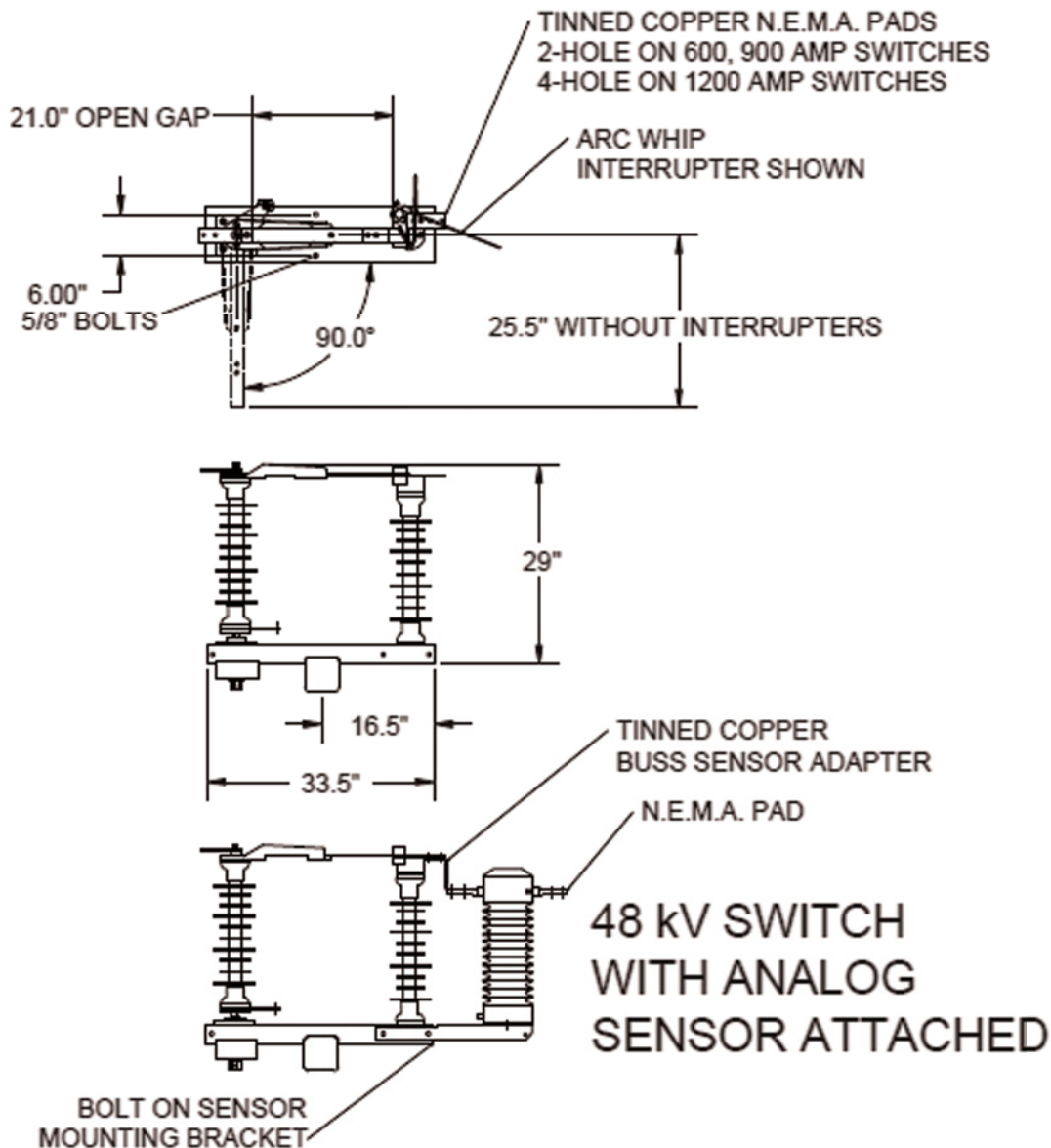


46 kV – 69 kV Sidebreak GOAB Switch: Configuration Drawings LBS4 (48kV) SINGLE PHASE dimensions



ALL LBS4 SERIES SWITCHES USE SEALED, STAINLESS STEEL BALL BEARINGS.
ALL CURRENT CARRYING COMPONENTS & CONTACTS SILVER PLATED C110 COPPER
ALL FERROUS COMPONENTS ARE HOT DIP GALVANIZED.
NO ALUMINUM OR COPPER CAST COMPONENTS USED.

SWITCH RATINGS	
Voltage Class: 48 kV nom. (48.5 kV max.) 250 kV BIL	
Current Class: 600, 900 and 1200 Amps, continuous	
Momentary Current Rating:	
600 A Continuous:	40,000 Amps, 10 cycles 25,000 Amps, 3 seconds
900 A Continuous:	51,000 Amps, 10 cycles 32,000 Amps, 3 seconds
1200 A Continuous:	70,000 Amps, 10 cycles 44,000 Amps, 3 seconds

This drawing is for illustrative purposes only and therefore; may, or may not reflect the current revision of this drawing. Please request the current revision from the factory.