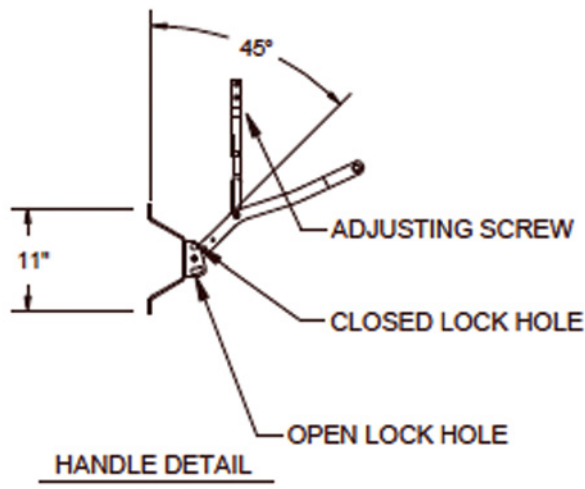
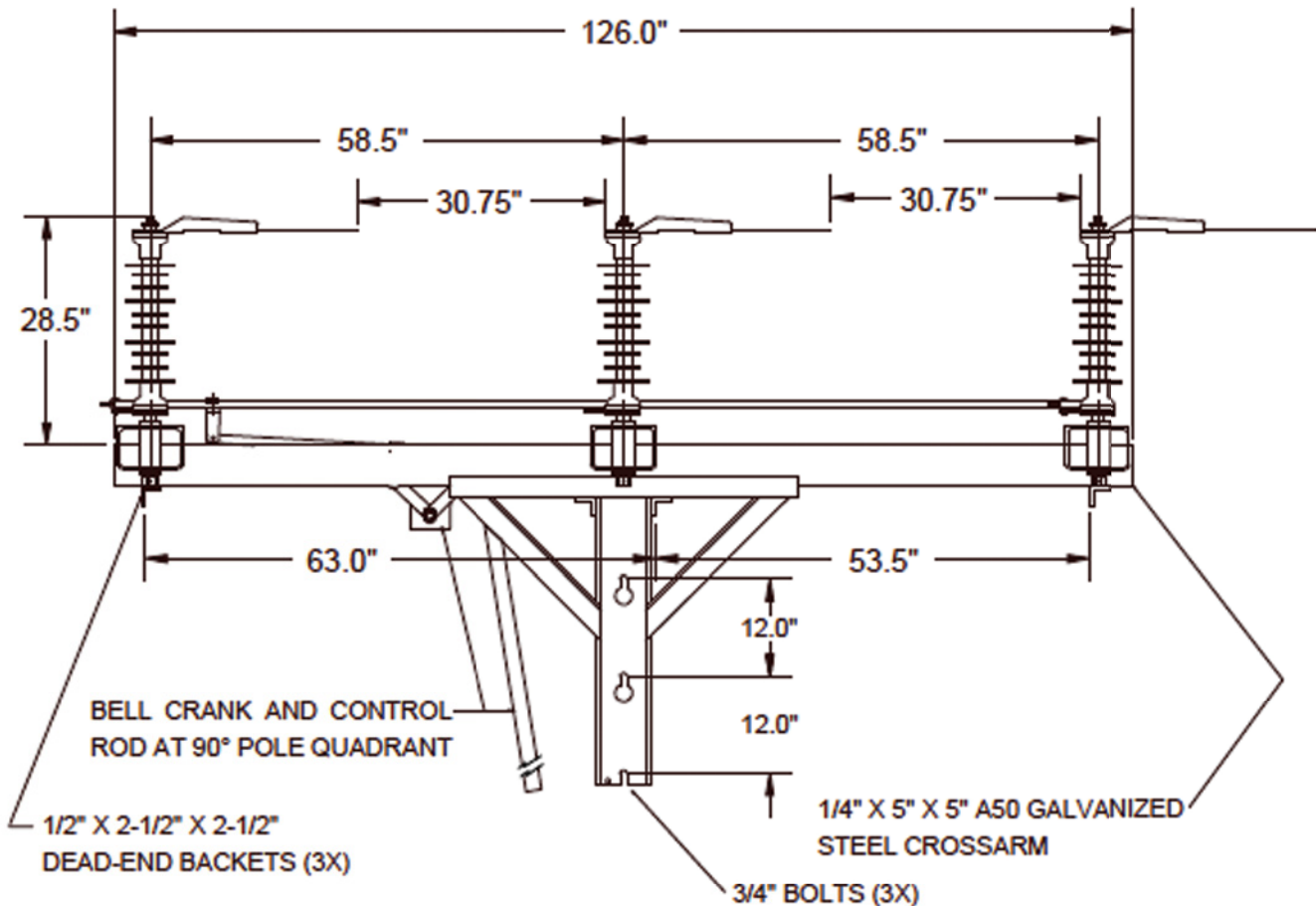


46 kV – 69 kV Sidebreak GOAB Switch: Configuration Drawings

LBS (48kV) HORIZONTAL (center mount) dimensions



SWITCH RATINGS

Voltage Class: 48 kV nom. (48.5 kV max.) 250 kV BIL

Current Class: 600, 900 and 1200 Amps, continuous

Momentary Current Rating:

600 A Continuous:	40,000 Amps, 10 cycles
	25,000 Amps, 3 seconds
900 A Continuous:	51,000 Amps, 10 cycles
	32,000 Amps, 3 seconds
1200 A Continuous:	70,000 Amps, 10 cycles
	44,000 Amps, 3 seconds

NOTE: RECIPROCATING CONTROL MECHANISM SHOWN.
TORSIONAL "SWING HANDLE" CONTROLS ARE AVAILABLE.

This drawing is for illustrative purposes only and therefore; may, or may not reflect the current revision of this drawing. Please request the current revision from the factory.