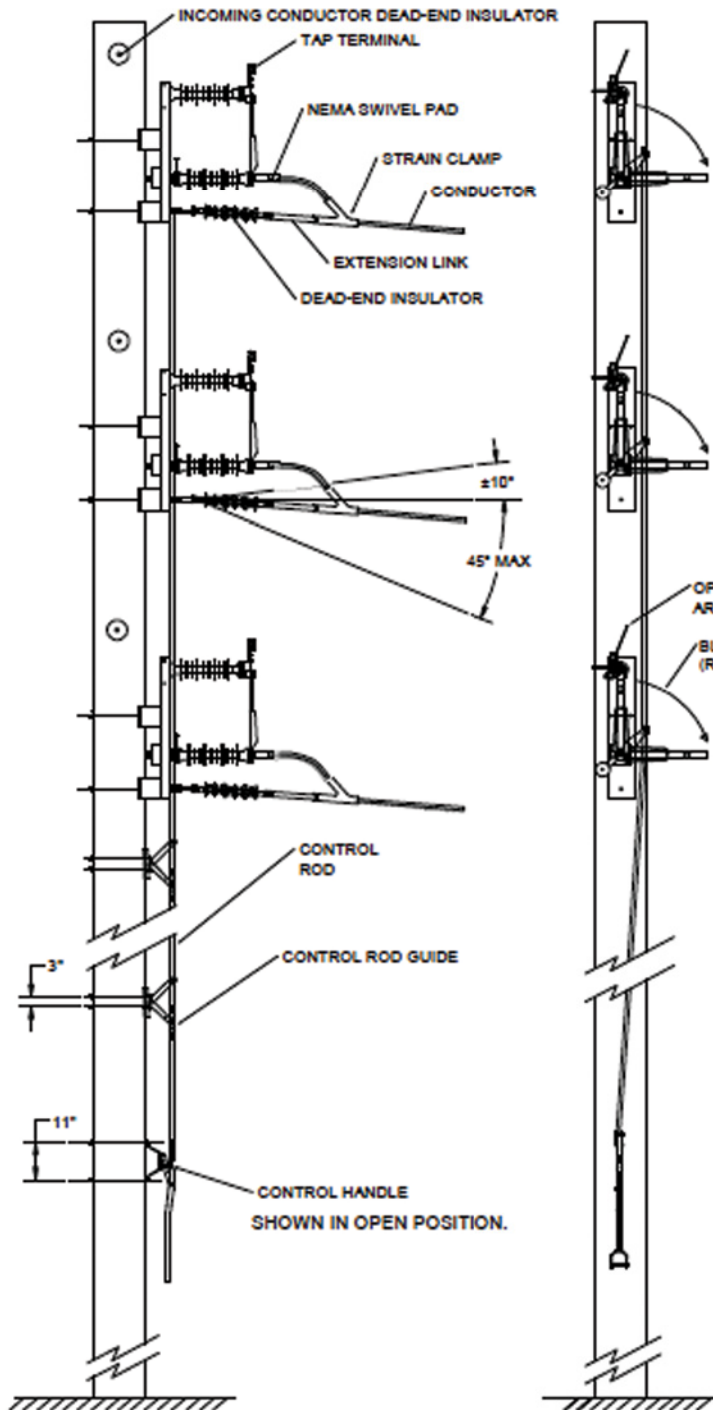


46 kV – 69 kV Sidebreak GOAB Switch: Configuration Drawings LBS (48kV) TAP SWITCH dimensions

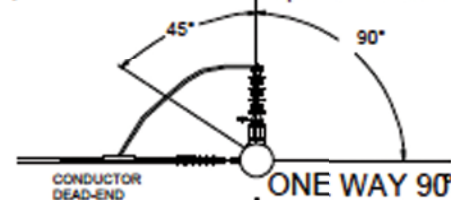
LineBOSS™ TAP SWITCH Configurations



THE VERTICALLY MOUNTED TAP SWITCH IS A GANG OPERATED POLE MOUNTED SWITCH WHICH CAN BE USED IN VARIOUS CONSTRUCTION APPLICATIONS. RIGHT HAND (SHOWN) AND LEFT HAND OPERATING MODELS ARE ADAPTABLE TO EXTREME HORIZONTAL AND VERTICAL LINE ANGLES. TIN PLATED COPPER BUSS "TEES" AND BOLTED CONDUCTOR CLAMPS ARE AVAILABLE FOR CONNECTING TWO, THREE AND FOUR-WAY SWITCH CONFIGURATIONS.

Switch dead-end conductor can dead-end to the pole at up to 45° on this side.

Switch dead-end conductor can dead-end to the pole at up to 90° on this side.



ONE WAY
IN-LINE

TWO WAY

THREE WAY

THREE WAY

SWITCH RATINGS

Voltage Class: 48 kV nom. (48.5 kV max.) 250 kV BIL	
69 kV nom. (75.5 kV max.) 350 kV BIL	
Current Class: 600, 900 and 1200 Amps, continuous	
Momentary Current Rating:	
600 A Continuous:	40,000 Amps, 10 cycles 25,000 Amps, 3 seconds
900 A Continuous:	51,000 Amps, 10 cycles 32,000 Amps, 3 seconds
1200 A Continuous:	70,000 Amps, 10 cycles 44,000 Amps, 3 seconds

This drawing is for illustrative purposes only and therefore; may, or may not reflect the current revision of this drawing. Please request the current revision from the factory.