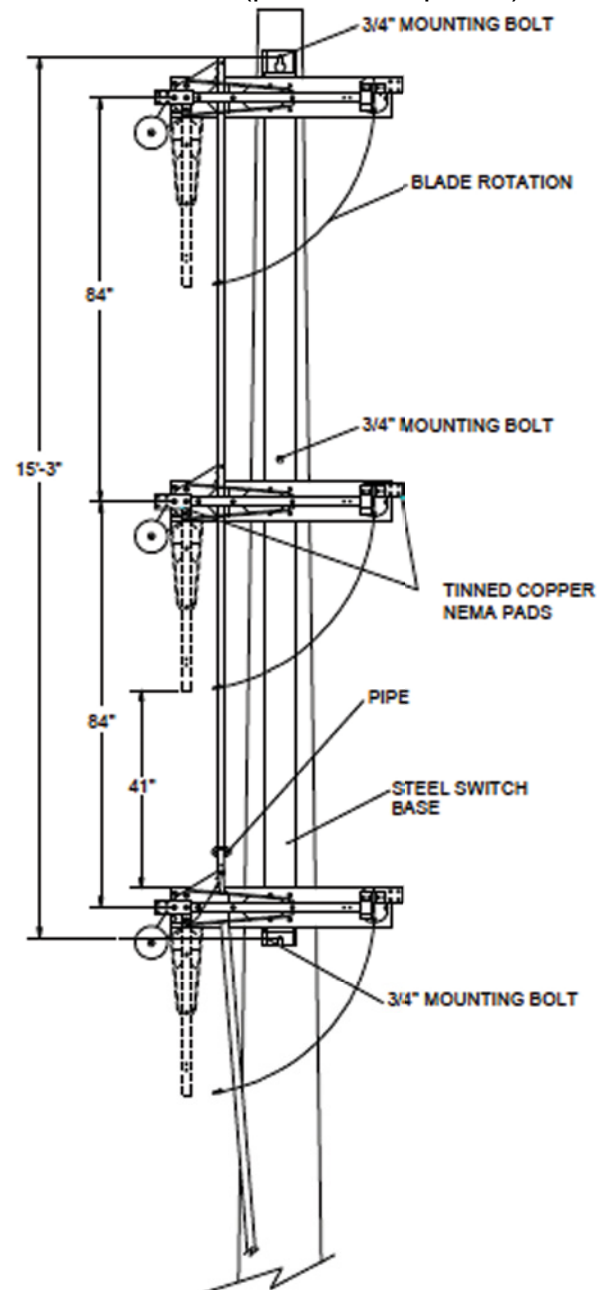
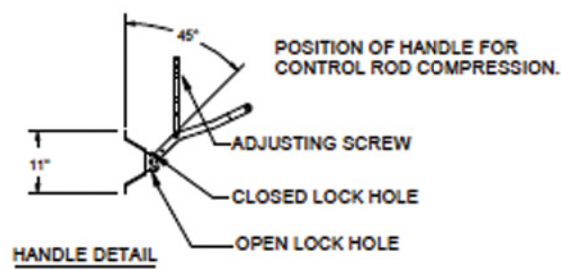
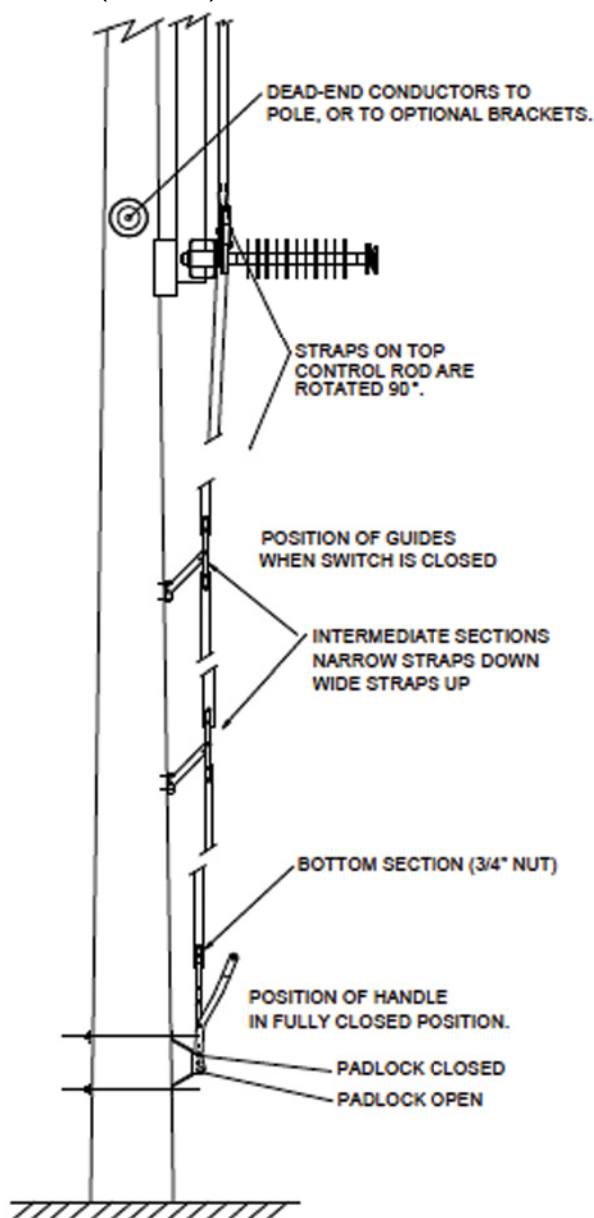


## 46 kV – 69 kV Sidebreak GOAB Switch: Configuration Drawings

LBS6 (72.5kV) VERTICAL SQUARE FIBERGLASS CONTROL (phase-over-phase) dimensions



SWITCH RATINGS	
Voltage Class: 69 kV nom. (72.5 kV max.) 350 kV BIL	
Current Class: 600, 900 and 1200 Amps, continuous	
Momentary Current Rating:	
600 A Continuous:	40,000 Amps, 10 cycles 25,000 Amps, 3 seconds
900 A Continuous:	51,000 Amps, 10 cycles 32,000 Amps, 3 seconds
1200 A Continuous:	70,000 Amps, 10 cycles 44,000 Amps, 3 seconds

This drawing is for illustrative purposes only and therefore; may, or may not reflect the current revision of this drawing. Please request the current revision from the factory.