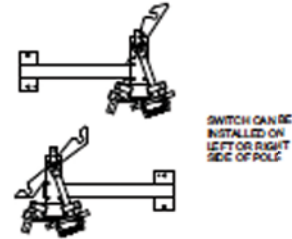
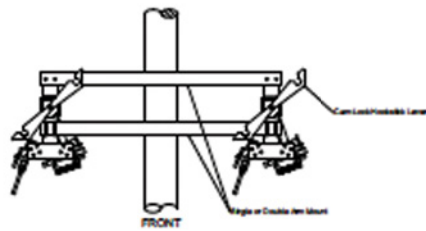
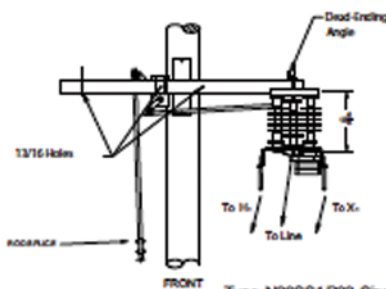


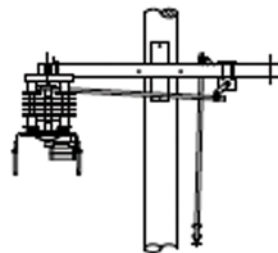
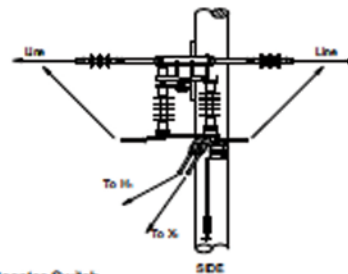
4,160 V to 27,000 V Regulator Switches



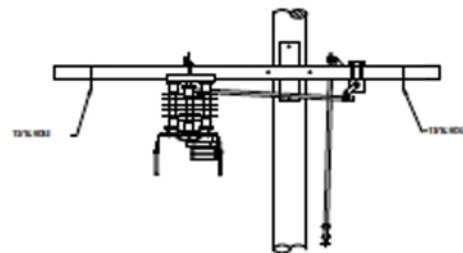
Hookstick Operated Bypass switches for One, Two and Three-phase Regulator switching



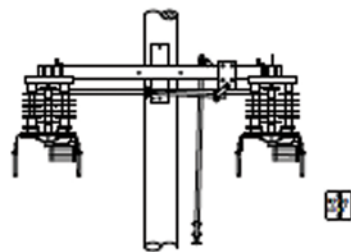
Type N26SS1R22 Single-pole 23kV, 600 Amp Unitized Booster Switch



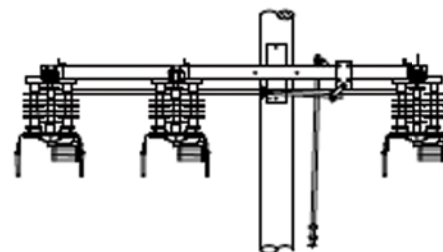
Type N26SS1L22 Single-pole 23kV, 600 Amp Unitized Booster Switch



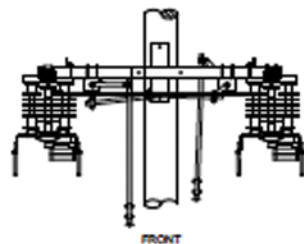
Type N26SS4R22 Single Pole (Center) 23kV, 600 Amp Unitized Booster Switch



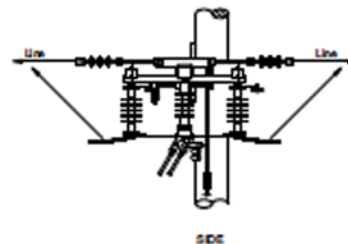
Type N26SS2R22 Double-pole 23kV, 600 Amp Unitized Booster Switch



Type N26SS3R22 Triple-pole 23kV, 600 Amp Unitized Booster Switch



Type N26SS2DR22 Twin 23kV, 600 Amp Unitized Booster Switch



This drawing is for illustrative purposes only and therefore; may, or may not reflect the current revision of this drawing. Please request the current revision from the factory.